

Flute

Liz Barcan is a graduate of the Victorian College of the Arts. Her career has ranged from orchestral playing to chamber and avant-garde music. Liz has over 20 years experience teaching flute to all ages. She has directed groups for the Victorian Flute Guild, Melbourne Youth Music, State Music Camp and at three previous Harrietteville camps, most recently in 2009. She teaches at Avila College and Lauriston Girls' School.

Double Reed / Wind Chorale

Pauline Coates' double reed career spans the past 20 plus years, during which time she has dedicated her career to teaching. Her ability to impart knowledge combined with her own exceptional technique and performance skills has stood her students in good stead, with many landing jobs in orchestras both in Australia and Europe. She has strong commitment to community music and enjoys playing bassoon in her local orchestra. Pauline is currently teaching double reeds at Haileybury and MLC, is an AMEB examiner and is also expanding her own private practice.

Saxophone/Big Band

Geoff Earle graduated from the then State College of Victoria in Melbourne in the late '70s and has taught instrumental music at a number of secondary colleges and tertiary institutions. Apart from his teaching load, he works as a freelance musician in and around Melbourne in orchestras, big bands, "pub-bands" and musical theatre, including a long-standing association with MLOC where he has given his expertise to roles on stage, in the pit and, inevitably, as musical director.

Brass

Alexandra Cameron is currently Head of Music at Wesley College, Elsternwick Campus. A fine trumpeter, she began her teaching career in Hamilton where she was Director of Music at The Hamilton and Alexandra College for 11 years. Her commitment to community music is evident from her involvement with many groups in Hamilton as an accompanist, conductor and soloist. Since moving back to Melbourne she became a playing member of the Diamond Valley Brass Band, where she is now Deputy Musical Director.

Lower Brass

Eric Klay is a long-standing member of the Melbourne Symphony Orchestra where he holds the position of principal bass trombone. In 1995 he was invited to the International Trombone Symposium held at the University of Nevada to give a master class and recital. The following year saw him touring as a soloist with the Queensland Symphonic Winds to Singapore and Hong Kong and releasing his solo CD 'Wind Song' to international critical acclaim. He has worked with the AMEB on a number of books, the most recent the Technical Workbook for Trombone, Tuba, Euphonium and Bass Trombone Grades 1-8. Eric performs in all styles of music having backed Sammy Davis Jnr, Frank Sinatra, Debbie Reynolds, Bob Hope, Nelson Riddle, Elton John, John Farnham and Debra Byrne on their Australian tours.

Percussion and Rhythm Co-ordinator

Anne Earle has lent her impressive expertise to the Music Camp for many years and her African rhythm sessions, introduced a number of years ago, proved very popular. So popular, indeed, that she was inveigled upon to broaden the role and now co-ordinates all things percussion, as well as conducting her popular afternoon tutorials in percussive world music.

Music Camp Staff

Sally Dugan and **Anne Pitcher** are long-term committee members of Whitehorse Orchestra and habitués of the Harrietteville Music Camp. Their enjoyment of and belief in community music led them to turn their hands to the administrative challenges provided by the Camp and they're still at it well over a decade later!

Inquiries

General information

Sally (03) 9898 6809 or 0418 132 905 sfdugan@melbpc.org.au
Anne (03) 9725 3321 or 0423 848 871 pitcher.anne@gmail.com
Gerald (03) 9898 8014

Music Camp Tuition Fee

Note: Accommodation is not included in this fee. Prices quoted are per person.

Full Cost	Seniors & full time students	Concession (Health Care Cards)
\$550	\$495	\$462

(NB: prices quoted are per person)

Accommodation and Meals

Mountain View Holiday Retreat is the main campus for the Harrietteville Music Camp. It offers simple but comfortable accommodation and serves good country-style meals. Bookings for accommodation and meals can be made direct with Michael and Hilary Cole at Mountain View on (03) 5759 2530 or email: info@mountainviewretreat.com.au

Prices for Mountain View accommodation & meals package for 2010:	Twin Share with private facilities	Dormitories 4-5 people with private facilities
Per person	\$498	\$440

Non-residents – Whilst Mountain View is our home and we recommend you stay there to enjoy the full experience, you are welcome to make your own bookings at local motels, flats, B&Bs, or the nearby caravan park. See www.alpinelink.com.au

Meals – All fees include morning and afternoon teas and happy hour refreshments (wine excluded). All meals are included in the fees for those staying at Mountain View. Non-residents choosing to eat at Mountain View may order casual meals, either for the whole camp or day by day.

Breakfast: \$15 per head; Lunch \$15; Dinner, \$22.

Full meal package (8 dinners, 5 lunches and 8 breakfasts) \$250

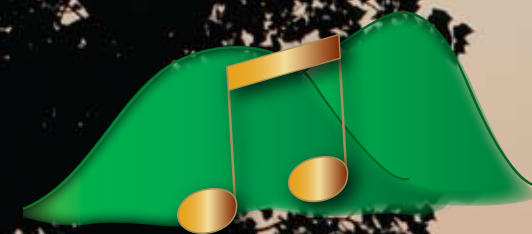
There is no need to make a decision prior to the Camp's start.

How to Book

- ✦ Closing date: Tuesday, 1 December, 2009
- ✦ Read the enrolment form attached
- ✦ Complete one application form per person (photocopies are acceptable)
- ✦ Include Music Camp tuition fee with your application
- ✦ All applications will be acknowledged in writing
- ✦ Accommodation: reserve this directly with Mountain View or other local establishment.

Enrolment forms also available on:
www.whitehorseorchestra.org.au

2010 HARRIETTEVILLE



Music Camp

An 8-day musical holiday
for adults of all ages

Held under the auspices of the
Whitehorse Orchestra Inc.



9 – 17 January 2010



HARRIETVILLE MUSIC CAMP January 2010 ~ Enrolment Form

STUDENT DETAILS

Have you attended Harrietville Music Camp before? Yes No

Surname _____

Given names _____

Address _____

Suburb _____ Postcode _____

Phone (H) _____ Mobile _____

Email _____

Age (please circle) 20s 30s 40s 50s 60s 70s 80s

* **ACCOMMODATION:** Where will you be staying?

* TUTORIAL GROUP:

* NB: Refer to brochure for information regarding fees, tutorial groups and accommodation.

Concessions (documentation and concession no. must be included with your enrolment)

Tick the appropriate concessions:

Health/pension card Seniors card

Student Unemployed

Copy of concession documentation enclosed.

Card No.:

* PAYMENT DETAILS

Cheque (for \$ _____) Money Order (for \$ _____)

Made payable to Whitehorse Orchestra

Mastercard Visa Expiry Date ____ / ____

Card No: _____

Amount paid: (please cite whether payment is by cheque or card)

\$ _____

Card holder's name (block letters) _____

Card holder's signature _____

(NB: Whitehorse Orchestra is not registered for GST)

Send enrolment form addressed to:
Harrietville Music Camp,
C/- 27 Kingsley Crescent,
Mont Albert, Vic 3127, together
with credit card details, cheque,
or money order.
Cheques & Money Orders payable
to Whitehorse Orchestra.

WITHDRAWAL OF ENROLMENT
with at least two weeks' notice
prior to Camp's commencement
will incur a \$50 fee, the balance
to be refunded. Refunds will
not be issued for withdrawals
given within a fortnight of the
commencement of Camp.

Music Camp 2010

If it's music you want, come along to Harrietville, the last petrol stop before the climb to the Victorian Alps, where the grass is green, the air is ever fresh, the days are warm, the evenings are cool, and the backdrop of gum clad mountains is truly beautiful. Come along in January to clear the mind, enjoy a break, start the year on a high. Bring your instruments and vocal chords to join friends old and new for a week of uninterrupted music-making. Discover the joys of what's now known as The Harrietville Experience... after all, it'd be a shame to miss out, wouldn't it?

The Music Program

The Camp begins at 5.30pm on Saturday, 9 January and concludes after breakfast on Sunday 17 January.

The program is intensive, with tutorials, orchestra and ensemble sessions from morning to mid-afternoon. Tutorials offer specialised tuition from experts, and are followed by a variety of ensembles, including: Orchestra, String Orchestra, Wind Chorale, Symphonic Orchestra, Big Band, Choral and Percussive World Music.

Performances include the informal student-run happy hour each evening in the midst of the gorgeous Mountain View gardens. Then there's the Student Concert, held in Harrietville, the Big Band night held at the local pub, and the final showcase concert of orchestras, choral group and massed choir in Bright on the final Saturday.

Social Activities

The social program, mainly organised by the students, offers a chance to relax and enjoy good company. Past events have included cabaret nights, film nights, bush dances and trivia nights. Individual activities range from the energetic: cycling, bushwalking, horse-riding, swimming, even jogging if it's your want... to the pleasurable occupations of lazing about with a book down by the creek or in the beautiful grounds of Mountain View, or perhaps chatting with friends at the ice-creamery across the road. If none of these suit, there's always practice to fall back on... it sure is a hard life!

The Whitehorse Orchestra

Many members of the Whitehorse Orchestra have had a long association with the Harrietville Music Camp and thus it was the Orchestra that the Council of Education turned to for assistance in running its Camp. The Orchestra, supported by the City of Whitehorse, believed this work to be an important contribution to the development of community music and was very happy to do so. Some years later and with many regrets, CAE passed the baton to the Whitehorse Orchestra. The Orchestra is proud to keep alive this wonderful musical institution.

Who Can Enrol?

The Camp is for enthusiastic learners to competent instrumentalists and singers. There are no formal entrance requirements but ability to sight read at AMEB Grade 4 level or thereabouts is advisable.

TUITION: The tutors are chosen for their experience, enthusiasm and expertise.



Music Director and Lower Strings

Gerald Keuneman brings a wealth of experience to his work as an orchestral conductor. As musical director of the Whitehorse Orchestra and the Victorian Concert Orchestra he has a proven ability to embolden the musical journey in players of all standards. Performances combining

international soloist and amateurs are a regular occurrence as are concerts designed to introduce children to the wonderment of orchestral music. He is past president and conductor of the Victorian State Music Camp and is vitally connected to the creation of excellence in young talent. Twenty-five years of performing in Australia and overseas, under the baton of world famous conductors and with many eminent international artists in both the classical and popular fields have given him the experience to produce programs and musical experiences of great enjoyment and creativity. Featured on the recordings of over 100 major films, TV and documentary scores, Gerald has worked closely with many prominent composers from America and Australia.



Choral Director

Doug Heywood began his career as principal with the National Theatre Opera Company but has since concentrated on a life of conducting. He is Music Director of Camberwell Chorale, Camerata Orchestra, Victorian State Singers and is Choral Director at Haileybury College. He is also Choral Director of Channel 9's famed Carols

by Candlelight and his commitment to music has earned him an Order of Australia.

Upper Strings

Philip Carrington has had extensive experience working with adult string and orchestral players. He has taught and coached students of all standards and musical interests, being sought out by players as varied as bush band and rock fiddlers, world music performers, Melbourne Symphony Orchestra players and soloists, to help solve specific problems.

Players have called him inspirational, dedicated, empathetic, enjoyable, visionary and energetic, and his 'rare and admirable qualities as an orchestral trainer and conductor' have been noted by music critic John Sinclair.

Philip's commitment to community music spans decades, and includes many years conducting the Dorian Le Gallienne and Zelman Orchestras in Melbourne. We are delighted to welcome him to the Harrietville Music Camp team.

Clarinet/Concert Band

Chris McGillen is Director of Music at St Michael's Grammar School. He studied clarinet in Australia and in the UK, where he was awarded the Lord Edward Boyle Instrumental Scholarship for further studies. He has performed and toured with such groups as The Australian Wind Sinfonia and the Melbourne Wind Orchestra, and has conducted professional and amateur wind ensembles chamber groups both here and in the UK.

Continued over >